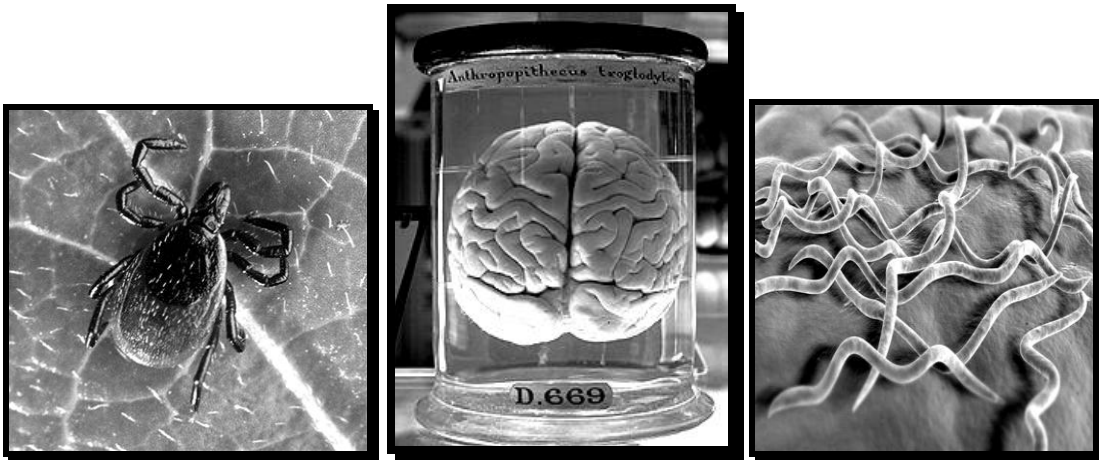


Multiple Sclerosis

Is it an infection of the brain?



Microbiologist

Thomas M. Grier

Superior Public Library

Thursday September 22nd

6:30 PM

The bacterium that causes Lyme disease is capable of entering the human brain quickly and easily. Human pathology evidence since 1911 has linked Multiple Sclerosis to a class of bacteria known as spirochetes. Lyme disease may be one of the possible causes of MS and is often misdiagnosed as MS. Join us as we look at evidence of sequestered brain infections as a possible cause of MS. *(Contact Tom Grier for more Information: 218-728-3914)*